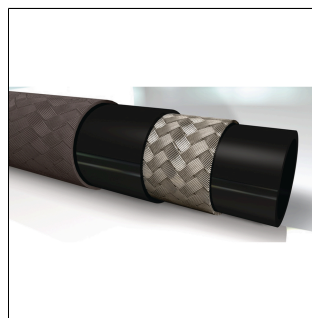


### Properties

Inner tube	oil resistant, synthetic rubber
Reinforcement	one textile braided insert and one steel wire braid
Cover	one textile braided insert embedded in synthetic rubber
Application	low and medium pressure circuits
Colour	black
Media	mineral oil poly-glycol based oil water (0 °C to +70 °C) water-oil-emulsions
Standard	SAE 100 R5
Temp. max.	100 °C
Temp. min.	-40 °C
Customs tariff number	40092100



The product image may differ

### Items

Identification	DN *	Inch	Size	Inside Ø min. (mm)	Inside Ø max. (mm)	Outside Ø min. (mm)	Working pressure (bar)	Outside Ø max. (mm)	Test pressure (bar)	Burst pressure (bar)	Bend radius min. (mm)
MD 104	5	3/16"	4	4.8	5.5	12.7	207	13.7	414	827	76
MD 106	6	1/4"	5	6.4	7.2	14.3	207	15.3	414	827	95
MD 108	8	5/16"	6	7.9	8.7	16.7	155	17.6	310	620	102
MD 110	10	13/32"	8	10.3	11.1	18.9	138	20	276	552	117
MD 113	12	1/2"	10	12.7	13.7	22.8	121	24	241	483	140
MD 116	16	5/8"	12	15.9	17	26.8	103	28	207	414	165
MD 120	22	7/8"	16	22.2	23.3	30.6	55	32.2	110	221	187
MD 125	28	1.1/8"	20	28.6	29.8	37.3	43	38.9	86	172	229
MD 132	35	1.3/8"	24	34.9	36.1	43.7	34	45.2	69	138	267
MD 140	38	1.13/16"	32	46	47.2	55.2	24	57.6	48	97	337

DN = nominal diameter, nominal width